



**HONDA**  
The Power of Dreams

**How we move you.**  
CREATE ► TRANSCEND, AUGMENT

— THE ALL NEW 2021 —  
**CITY**  
CITY HAS TAKEN OVER!



Honda Atlas Cars (Pakistan) Limited  
43 km Multan Road, Manga Mandi, Lahore  
[www.honda.com.pk](http://www.honda.com.pk)

# CITY has taken over

What is this thing of beauty?

It's desire

It's exhilaration

It's luxury & innovation

It's for the jet-setter & the go-getter

It's for the street & every beat

It's poetry in motion

It's performance on wheels

Racy, sassy & oh so sleek

It's for everyone of you

&

It has taken over!





It's all in your touch. Empowered by smart entry with an automatic trunk opener and secured with an immobilizer, the new City is beyond the rest, in a league of its own. Nothing can match up as it goes forth and claims its authority.

CITY IS SET TO GO IN OVERDRIVE



The boldness of the honeycomb grill and curves of the bumper exude character. The new City's sleek head lamps flaunt a class much above its peers. Sophisticated in design and technically advanced, the lamps and LED DRLs are a style signature of the City silhouette.



HONEYCOMB GRILL: Iconic honeycomb pattern on the grill.

FOG LIGHT: New fog lights enhance the look and increase visibility in low light conditions.



CHROME DOOR HANDLES: Stylish door handles with chrome finish.

ALLOY WHEELS: 15" Sporty Diamond Cut alloy wheels.



HALOGEN HEADLIGHTS WITH LED DRL: Sophisticated and innovatively designed headlights with modern aesthetic to enhance road visibility.

IT IS AN UNCHALLENGED LEGACY THAT HAS TIME AND AGAIN REINVENTED ITSELF.



Every upgrade bringing with it a fresh wave of intuitive technology and exciting design. Retractable door mirrors add to its unmatched class.

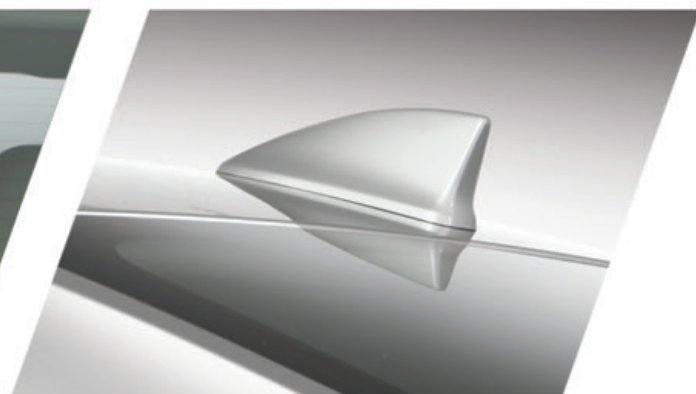
Elegant front is complimented further with an even alluring rear. With features that offer great value and functionality. From the radiating high mount stop lamp to an ergonomically sound rear bumper, from shark fin to a spacious trunk. The City leaves nothing behind.



**HIGH GROUND CLEARANCE:** For a smooth driving experience on rough terrains.



**HIGH MOUNT STOP LAMP:** For added rear safety.



**SHARK FIN ANTENNA:** Color matched antenna for improved reception.



**SPACIOUS TRUNK (510 L):** Spacious and fully carpeted trunk with smart opening button.



**REAR VIEW CAMERA:** For secure parking.



**SMART ENTRY WITH TRUNK OPENER**



**HONDA EMBLEM**



**REAR COMBI LAMPS**

**EXQUISITE LOWER GARNISH**

If it's a CVT, it's got to be a Honda. The CVT transmission of the New Honda City is innovation at its best. It harnesses both efficiency and performance.

STYLE FUSES WITH SMOOTHNESS AND PLEASURE



City's advanced interface experience offers superior ergonomics with an asymmetrical dashboard that is inspired from airplane cockpits and is centered towards the driver.



AUTO AC: AC with touch control panel.

PUSH-START SYSTEM: Start the engine with the push of a button.



TILT & TELESCOPIC STEERING: Helps to adjust the steering wheel according to the driver's height by moving the wheel through tilted and telescopic movement.

AIR VENT:  
Dust & pollen air filter.

FUNTAINMENT SYSTEM:  
9" Android Infotainment System with Navigation in-dash infotainment with 9" Capacitive Touch Screen System filled with an array of options including navigation (with 3D Support Live Search), built-in sim slot, USB/AUX Connectivity, Tune-in Internet Radio, Bluetooth, WiFi & Smartphone Easy Connect.

STEERING MOUNTED AUDIO CONTROL:  
Offers seamless convenient control during drive.

MULTI INFORMATION COMBINATION METER:  
High Definition Tri-dimensional 3-ring Meter with Multi-Function Driver Information Interface.

ONE TOUCH WINKER:  
For convenient lane shift.



AUTO AC:  
AC with touch control panel.

PUSH-START SYSTEM:  
Start the engine with the push of a button.

CRUISE CONTROL:  
For an enjoyable drive.

ECON MODE:  
To adjust vital system for fuel economy.



THE ERA OF ENDLESS DRIVING FUN BEGINS



A large FUNTAINMENT system gives a new meaning to in-drive entertainment and redefines excellence.





The impeccable interior is thoughtful and human centric. A grand cabin space with ample legroom, rear AC vents, an ergonomically designed cockpit, all come together to make your ride truly classy.



Extravagant Inner Chrome Handles



Rear Arm Rest with Cup Holders



Front Arm Rest with Console Box



Front Map Lamps



Rear AC Vents



Driver Seat Height Adjuster



Rear Accessory Sockets



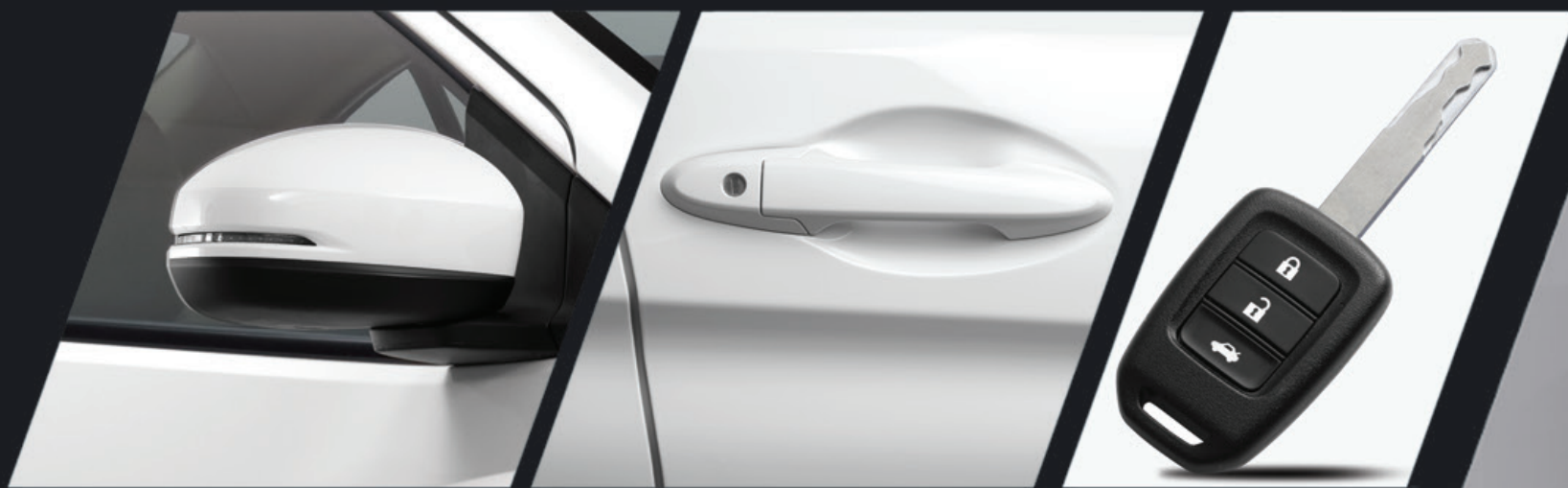
Front Accessory Socket

Same great looks with an added emphasis on efficiency and inclusion. Amazing ground clearance with all essentials.



15" TRIM WHEELS

HALOGEN HEADLIGHTS WITH LED DRL



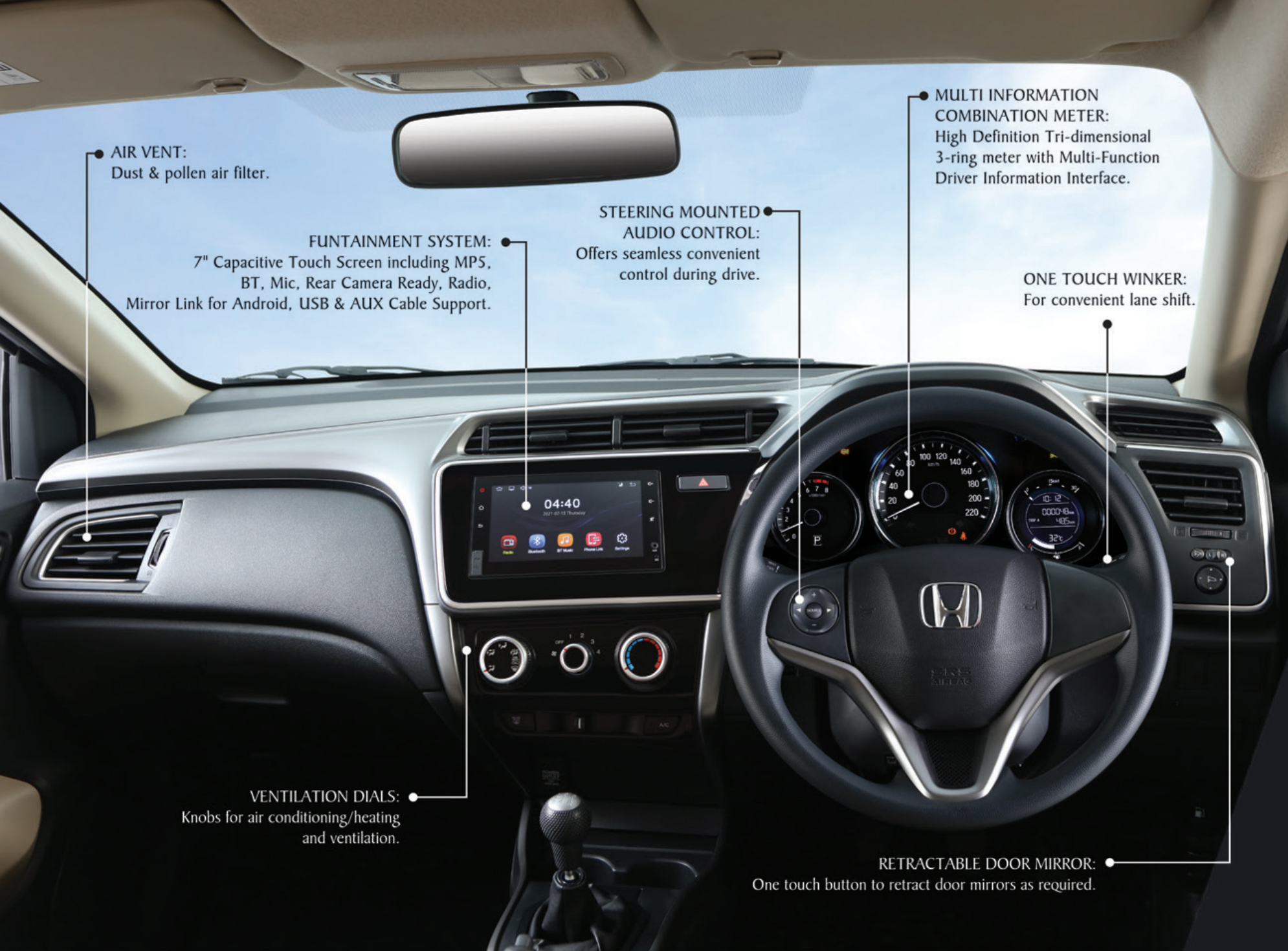
LED DOOR MIRROR INDICATORS

BODY COLOR DOOR HANDLES

KEYLESS ENTRY WITH TRUNK OPENER

CITY 1.2L  
ESPECIALLY DESIGNED FOR YOU





**AIR VENT:**  
Dust & pollen air filter.

**FUNTAINMENT SYSTEM:**  
7" Capacitive Touch Screen including MP5, BT, Mic, Rear Camera Ready, Radio, Mirror Link for Android, USB & AUX Cable Support.

**STEERING MOUNTED AUDIO CONTROL:**  
Offers seamless convenient control during drive.

**MULTI INFORMATION COMBINATION METER:**  
High Definition Tri-dimensional 3-ring meter with Multi-Function Driver Information Interface.

**ONE TOUCH WINKER:**  
For convenient lane shift.

**VENTILATION DIALS:**  
Knobs for air conditioning/heating and ventilation.

**RETRACTABLE DOOR MIRROR:**  
One touch button to retract door mirrors as required.



The impeccable interior is thoughtful and human centric. A grand cabin space with ample legroom, an ergonomically designed cockpit, all come together to make your ride truly classy.



Multi-Info display with outside temperature & digital clock



Rear Accessory Sockets



Control Panel



Extravagant Inner Matte Handles

The City 1.2L is a mixture of functionality and finesse, exhibiting the same signature pleasures that the City offers.

# POWER

## THE MANIFESTATION OF LUXURY AND PERFORMANCE

The newly designed Honda City is perfectly evolved and exhibits powerful performance with maximum comfort offering a smooth and luxurious drive. The i-VTEC engine combines extraordinary driving dynamics with enhanced practicality as it delivers greater fuel economy and offers an eco-friendly driving experience.

### i-VTEC

**1.2L**  
Impressive design and powerful performance of 1.2L i-VTEC engine generate output of 88 horsepower at 6,000 RPM and torque of 110 N.m at 4,800 RPM.

**1.5L**  
Experience the outstanding performance and greater fuel efficiency with a 1.5L i-VTEC engine that delivers output of 118 horsepower at 6,600 RPM and torque of 145 N.m at 4,600 RPM.



**DRIVE BY WIRE (DBW)**  
The all-new Honda City features Drive-by-Wire System ensuring smooth acceleration and powerful performance appropriate for all driving conditions.

**CVT TRANSMISSION**  
This innovative Honda Original Continuously Variable Transmission (CVT) is developed as part of, "Earth Dreams Technology." Engines have a speed range in which they are most efficient, CVT keeps the engine running within this range, improving fuel economy.



# ULTIMATE VALUE FOR MONEY

ENVIRONMENT FRIENDLY  
**EURO-4**



Manufacturing EURO-4 emissions standard engines in Pakistan

## FUEL EFFICIENCY

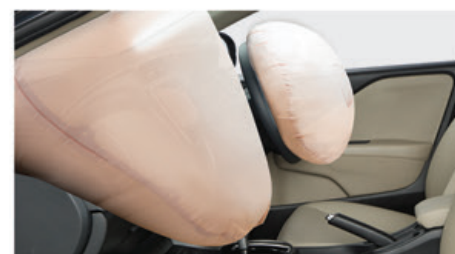


Excellent fuel efficiency & utmost performance

## WARRANTY INFORMATION



# SAFETY & SECURITY



## AIRBAGS

The Honda City embodies an elegant exterior with a safe and comfortable interior designed with advanced safety technologies to provide maximum safety. It incorporates dual SRS airbags for the driver and front passenger along with 5 seat belts to ensure maximum safety throughout the journey.



## IMPACT MITIGATING HEADREST

Designed to gain maximum protection during a rear-impact collision by minimizing the neck movement.



## ISOFIX SEAT

Honda City is equipped with ISOFIX, a standardized child seat fitting system that ensures maximum safety for the child and lets you drive in peace.



## IMMOBILIZER WITH SECURITY ALARM

The Immobilizer with security alarm system is an anti theft feature designed to enhance the security of the vehicle. By immobilizing the engine to ensure theft prevention.

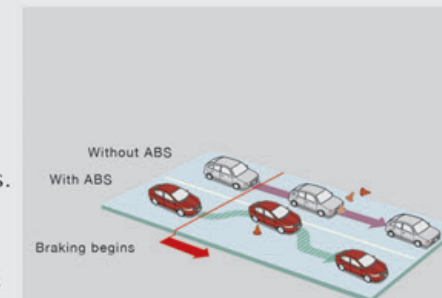
## AUTO DOOR LOCK BY SPEED

Honda's speed sensing door lock feature ensures a safe driving experience by automatically locking doors as the vehicle reaches a certain speed.

## ABS

ANTI-LOCK BRAKING SYSTEM

**ABS AS A STANDARD FEATURE**  
Anti-Lock Braking System is a standard safety feature that prevents the wheels from locking and gain steering control after sudden braking. It prevents the vehicle from skidding on slippery surfaces.



## BRAKE OVERRIDE SYSTEM

This is an active safety feature which cuts engine power supply in cases when brake and accelerator are being depressed at the same time to prevent the vehicle from potential collision.

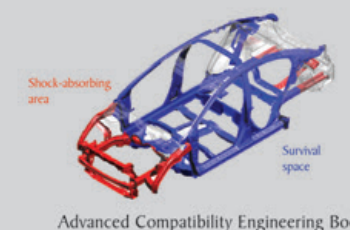
## REAR VIEW CAMERA

Experience a rear view of your surrounding designed to make parking safer and simpler.



## ACE BODY STRUCTURE

The revamped City features Honda's most innovative passive safety system, ACE Body Structure that ensures a safer driving experience in case of a collision. The Honda ACE body design absorbs and deflects the energy evenly in a frontal collision, reducing the energy transferred to the cabin space and other vehicles involved in the accident ensuring safety for everyone.



## PEDESTRIAN INJURY MITIGATION TECHNOLOGY

## SPECIFICATIONS/FEATURES

Model	1.2LS MT	1.2LS CVT	1.5LS CVT	1.5LAS MT	1.5LAS CVT
<b>Engine</b>					
Type	Water Cooled 4 Stroke, SOHC i-VTEC, 16-Valves 4-Cylinder				
Fuel Supply System	Port Fuel Injection				
Bore & Stroke (mm)	73 X 71.58			73 X 89.4	
Displacement (cc)	1,199			1,497	
Compression Ratio	10.1 : 1			10.4 : 1	
Maximum Horse Power (KW (HP) / RPM)	66 (88) / 6,000			88 (118) / 6,600	
Maximum Torque (N.m (Kgf.m) / RPM)	110 (11.2) / 4,800			145 (14.8) / 4,600	
Drive By Wire (DBW)	O				
Fuel Type (Minimum Recommended)	Unleaded 91RON				
<b>Transmission</b>					
Transmission Type	5 Speed Forward & 1 Reverse, Continuously Variable Transmission (CVT) with Earth Dreams Technology				
<b>Steering System</b>					
Steering Wheel Type	Electric Power Steering (EPS)				
Steering Column Adjustment	Tilt & Telescopic				
Minimum Turning Radius (m)	5.3				
<b>Dimensions &amp; Capacity</b>					
Overall Length (mm)	4,441				
Overall Width (mm)	1,694				
Overall Height (mm)	1,498				
Wheel Base (mm)	2,600				
Tread (Front / Rear) (mm)	1,492 / 1,481				
Ground Clearance mm (from ground to exhaust pipe)	171.88				
Seating Capacity (No. of People)	5				
Trunk Capacity (L)	510				
Fuel Tank Capacity (L)	40				
<b>Suspension System</b>					
Front	MacPherson Strut with Stabilizer				
Rear	Torsion Beam				
<b>Braking System</b>					
Brake Type (Front/Rear)	Ventilated Disc / Drum				
Anti-Lock Braking System (ABS)	O				
Electronic Brake Distribution (EBD)	O				
Brake Override System with Warning	O				
<b>Tires &amp; Wheels</b>					
Tire Size	175 / 65 R15				
Wheel Type	15 X 5.5 J Steel Wheels with Full Trim			15 X 5.5 J Diamond Cut & Coated Alloy Wheels	
Spare Wheel Type	15 X 5.5 Steel Wheel				
<b>Convenient &amp; Comfort</b>					
Keyless Entry	O (with Keyless Trunk Opener)			Smart Entry	
Push Start	-			O	
Auto Air Conditioner	-			O	
Rear Ventilation	-			O	
Cruise Control	-			O	
Driver Seat Height Adjuster	-			O	
Auto Door Lock by Speed	-			O	
Retractable Door Mirrors	Electric			Electric + Auto	

## SPECIFICATIONS/FEATURES

Model	1.2LS MT	1.2LS CVT	1.5LS CVT	1.5LAS MT	1.5LAS CVT
<b>Convenient &amp; Comfort</b>					
ECON Mode	-		O	-	O
Dust & Pollen Air Filter	O				
Steering Audio Switches	O				
One Touch Lane Winker	O				
Digital Clock	O				
Outside Temp Display	O				
<b>Exterior</b>					
Headlights	Premium Dual-Barrel Halogen				
Day Time Running Light	Integrated LED				
Rear Lights	Bulb (Advanced Wrap-around)				
Front Fog Lights	Optional (Bulb)			O (Bulb)	
Antenna	Micropole		Shark Fin		
Outer Door Handles Finish	Body Colored		Chrome		
Door Visors	Optional			O	
Outside Door Mirrors with Side Turn LED Light	Body Colored				
Rear License Plate Chrome Garnish	O				
<b>Interior</b>					
Multi Information Combination Meter	Tri-dimensional Three-Ring with White Illumination				
Seats, Armrests & Door Lining Inserts Material	Fabric (Hi-Grade Optional)			Hi-Grade	
Interior Color	IVORY				
Inside Door Handles	Black			Chrome	
Front All AC Vent Knobs, Hand Brake Knob Finish	Black			Chrome	
Trunk Lid Lining	O				
Rear Seat Armrest with Cupholder	O				
Front Map Lamps	O				
Vanity Mirrors	Driver + Front Passenger				
Accessory Socket	Front X 1 & Rear X 2				
<b>Audio</b>					
Car Infotainment System	7" Capacitive Touch Screen including MP5, BT, Mic, Rear Camera Ready, Radio, Mirror Link for Android, USB & AUX Cable Support (9" Android based DA is Optional)			9" Android based Capacitive Touch Screen including Navigation (with 3D support & live search), Built-in SIM Slot, USB / AUX Connectivity, Tune-in Internet Radio, Bluetooth, WiFi and Smart Phone Easy Connect.	
Speakers	2 Front (2 Rear Speakers Optional)			4 (Front & Rear)	
Tweeters	Optional				
<b>Safety &amp; Security</b>					
Dual SRS Airbags	Driver + Front Passenger				
Seat Belts	5				
High Mount Stop Lamp	O				
Rear Camera	Optional			O	
ISO Fix Compatible Rear Seats	O				
Impact Mitigating Headrest	O				
ACE Body Structure	O				
Pedestrian Injury Mitigation Technology	O				
Security Alarm	O				
ECU Immobilizer	O				

## EXPRESS YOUR PERSONALITY



Urban Titanium Metallic



Taffeta White



Lunar Silver Metallic



Crystal Black Pearl



Carnelian Red



Meteoroid Gray Metallic



Morning Mist Blue Metallic

Honda Atlas Cars (Pakistan) Limited reserves the right to change or modify equipment or specifications at any time without prior notice. Details, colors, descriptions and illustrations are for information purpose only. Optional features are subject to prices. For further details please check with your nearest Honda dealer or visit [www.honda.com.pk](http://www.honda.com.pk).

[/hacpl](https://www.facebook.com/hacpl)
[/hondapakistanofficial](https://www.instagram.com/hondapakistanofficial)
[/HACPL0Official](https://www.youtube.com/channel/UCACPL0Official)  
[/HondaAtlasCarsPakistanLimited](https://www.facebook.com/HondaAtlasCarsPakistanLimited)
[/company/honda-pakistan-official](https://www.instagram.com/company/honda-pakistan-official)

O = Standard